



Notice of road closure – A425 Leamington Road, Southam

September 2020 | www.hs2.org.uk

High Speed Two (HS2) is the new high speed railway for Britain. Balfour Beatty Vinci (BBV) is working on behalf of HS2 Ltd to build the new high speed railway in your area.

The timeframes in this notification may be subject to change and consents.

Planned works

We are closing a section of the A425 Leamington Road near Southam and the public right of way (PRoW) SM24. Our works require us to safely excavate a 15-metre-deep trench and construct the “cut-and-cover” section of the Long Itchington Wood Tunnel.

The road and public right of way will be closed from 26 October 2020 for a period of up to nine months. A diversion will be in place for cyclists and road users. A diversion notification for the PRoW will be placed at SM24 access points providing details of the alternative PRoW routes available ‘please see map overleaf’. Access will be maintained for businesses and residents within the section of the road that is closed. We will be installing “Businesses open as usual” signs for businesses leading up to the road closure.

Other nearby work and traffic management

HS2’s early works contractor, the Laing O’Rourke and J. Murphy & Sons (LM) joint venture, is also at work in this area to prepare for BBV’s main works. In coming months, LM will be setting up compounds; working on utilities; building a ‘green corridor’ of new woodlands and wildlife habitats; and removing the minimum amount of vegetation needed to safely build the railway. LM will also be redeveloping the B4455 Fosse Way between Long Itchington Road and Welsh Road, and working in Ufton to build a new pedestrian crossing and make changes to roads. On occasions LM’s work will involve traffic management such as temporary overnight road closures, lane closures and traffic lights. You may see some LM and BBV works underway in the wider local area at the same time. However, BBV and LM are working closely together to plan ahead, and manage the sequencing of our most significant works, to minimize the impact on communities and road users.

If you have a question about HS2 or our works, please contact our HS2 Helpdesk team on 08081 434 434 or email hs2enquiries@hs2.org.uk

Duration of works

The A425 Leamington Road and public right of way SM24 will be closed from 26 October 2020 for a period of up to nine months.

Working hours will be 8am to 6pm Monday to Friday and 8am to 1pm on Saturdays.

Our workforce will be on site one hour before and after to set up and take down our work equipment.

What to expect

Delays to journey times.

Potential increase in noise from the work we are completing.

We will keep all sites safe and secure.

What we will do

Inform you in advance of any changes to the dates shown.

For the latest information, please visit our dedicated web page about the A425 closure at hs2inwarwickshire.co.uk. Further information may be found at one.network

Notice of road closure – A425 Leamington Road, Southam

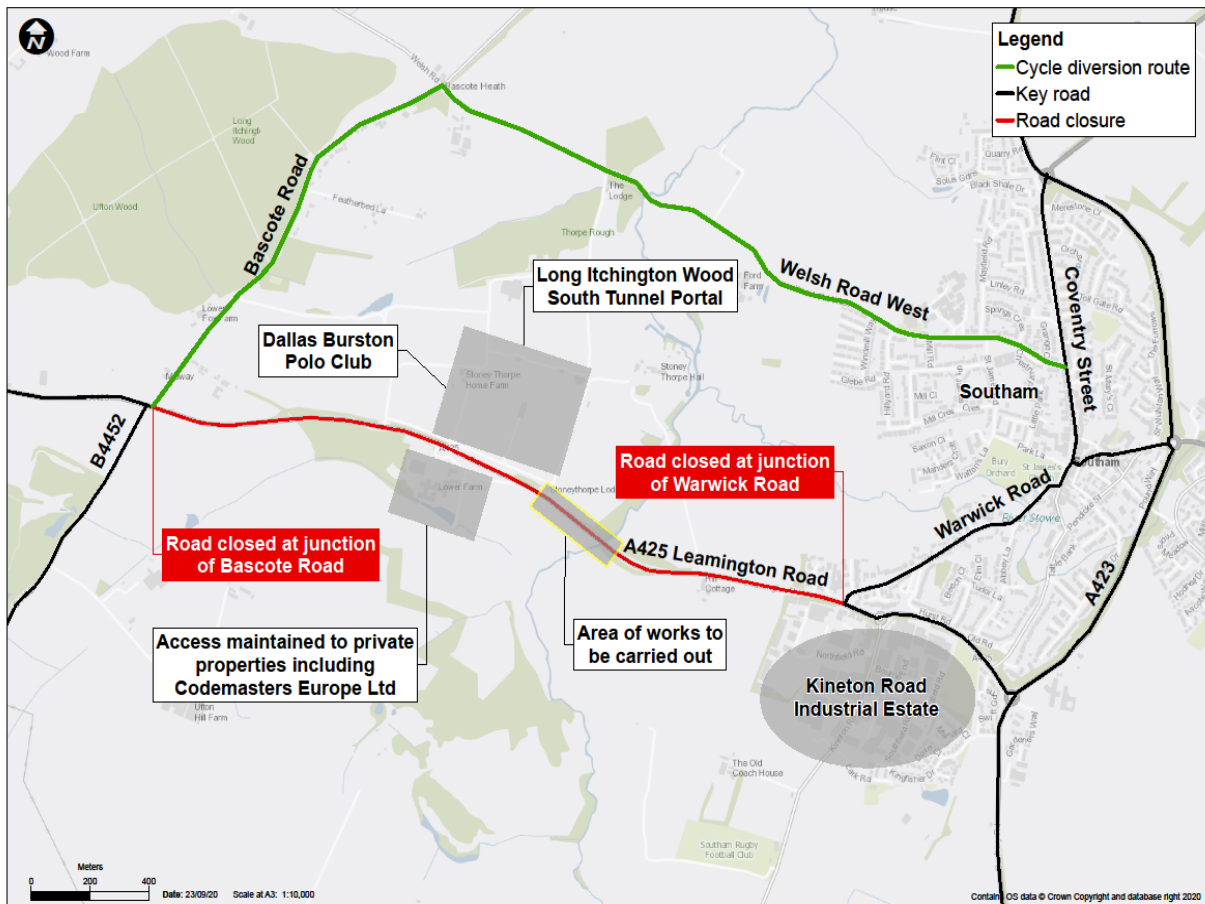
Notification



September 2020 | www.hs2.org.uk

www.hs2.org.uk

Map of A425 closure and cycle diversion route



Contact our HS2 Helpdesk team on **08081 434 434**

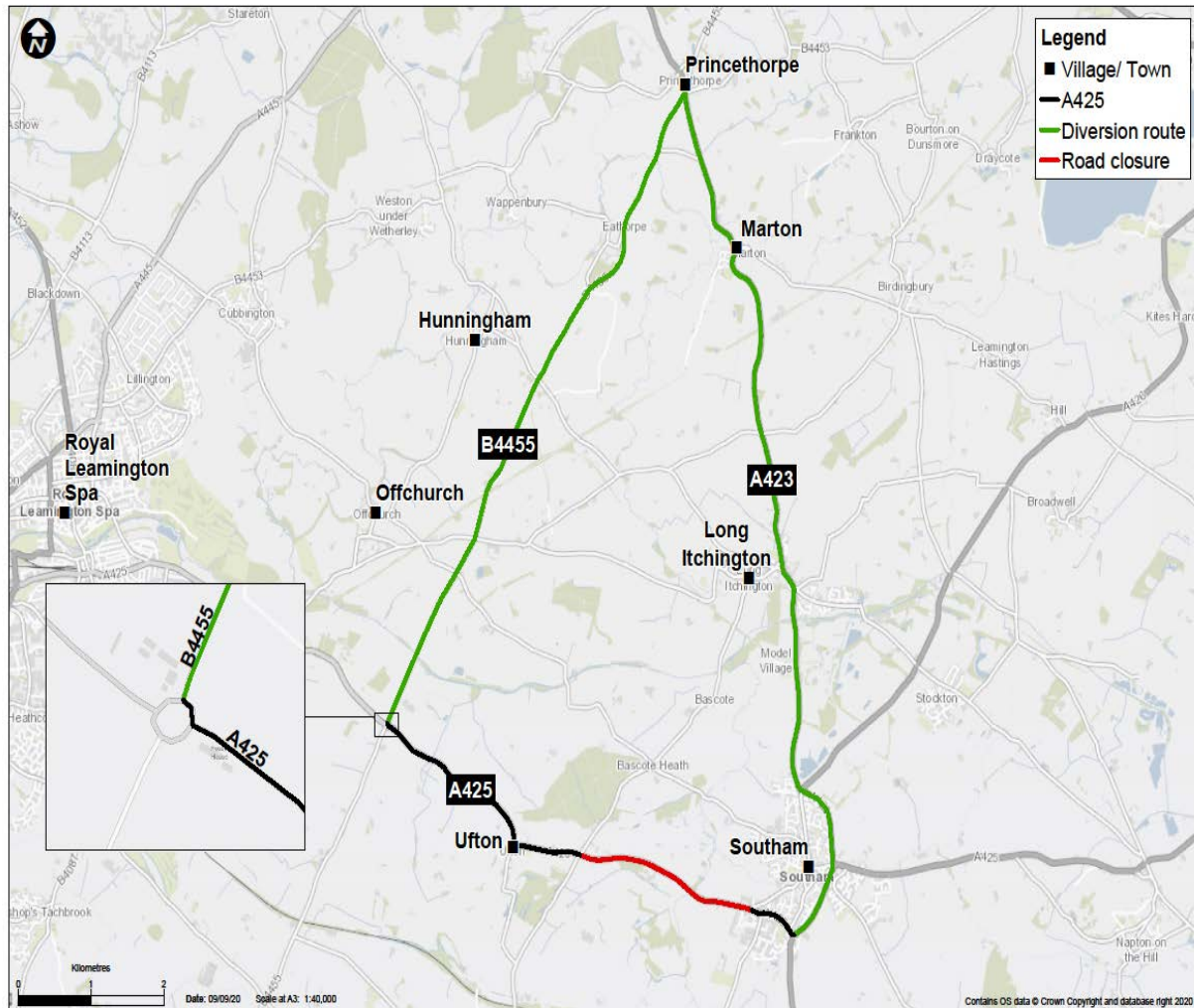
Notice of road closure – A425

Leamington Road, Southam

September 2020 | www.hs2.org.uk

www.hs2.org.uk

A425 vehicle diversion route



This is the official, recommended diversion route, which has been approved as suitable to carry large vehicles.

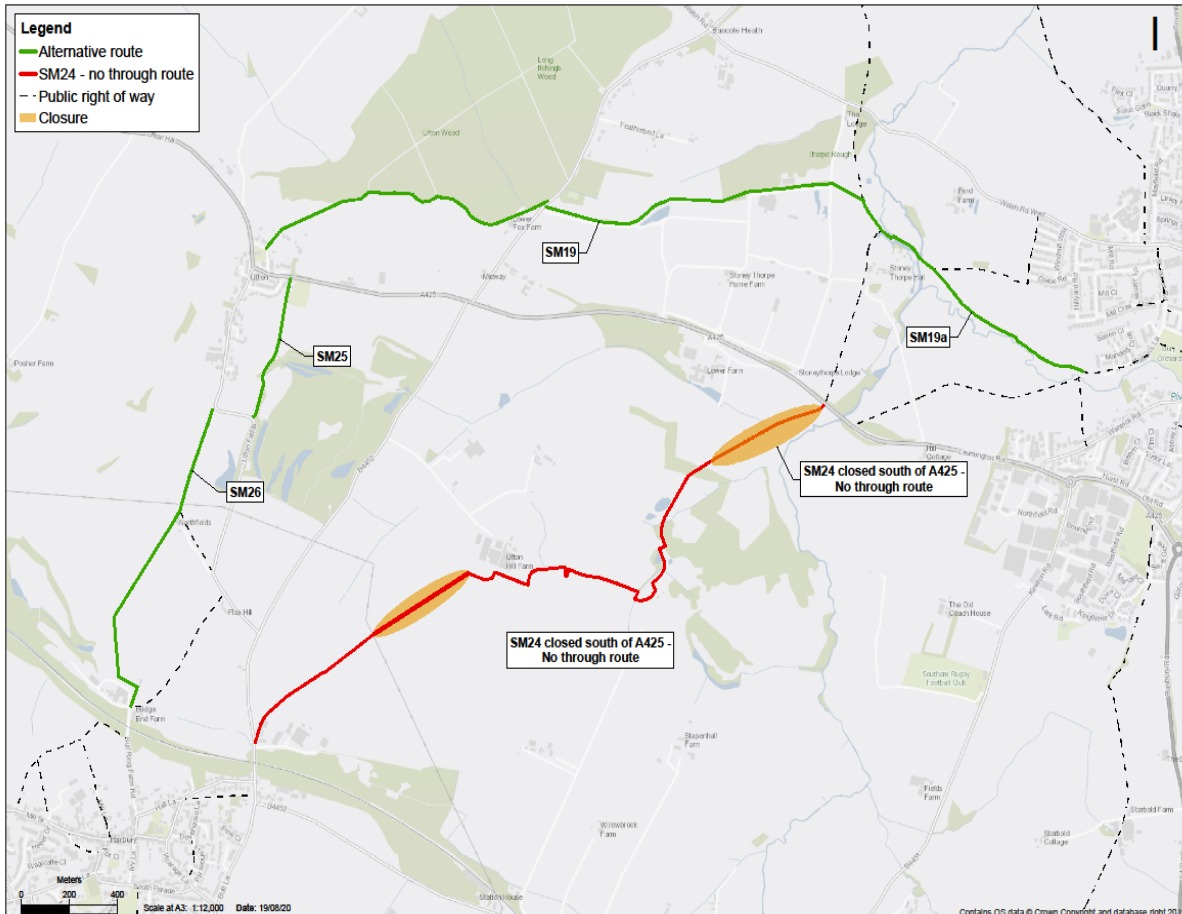
Contact our HS2 Helpdesk team on **08081 434 434**

Notice of road closure – A425 Leamington Road, Southam

September 2020 | www.hs2.org.uk

www.hs2.org.uk

SM24 Public right of way alternative route map



Information about HS2 construction works during the coronavirus (COVID-19) pandemic

We are continually reviewing the works on our construction sites in line with Government and Public Health England (PHE) advice on dealing with COVID-19. The Government's current COVID-19 strategy makes clear that construction activity can continue so long as it complies with this guidance. The health and safety of our workforce and the communities we affect is our key priority. Please be assured that those sites that are currently still working are doing so because they can operate within PHE and construction industry guidelines.

Join our webinar

We're holding a webinar where you can find out more about the work we'll be doing on the A425 and the Long Itchington Wood South Portal. To register for the webinar, please visit hs2inwarwickshire.co.uk

More information about this work is available at hs2inwarwickshire.co.uk
Further information about this road closure, and others, is also available on one.network

Contact our HS2 Helpdesk team on **08081 434 434**

What else is happening in your area?

www.hs2.org.uk

Contact our new HS2 Helpdesk team

Our new Helpdesk team is based in our Head Office in Birmingham. This is so that we can provide you with the best service possible. Our team is here to listen and respond to your enquiry, complaint or feedback to help us be a good neighbour.

You can contact our Helpdesk team all day, every day of the year on:

Freephone: **08081 434 434**

Minicom: **08081 456 472**

Email: hs2enquiries@hs2.org.uk

Keep up-to-date with your local community website

To find out more about what's happening in your area and receive regular email updates, you can sign up to our local community websites at: www.hs2inyourarea.co.uk.

About our Community and Business Funds

We are offering two funds that are available to local communities and businesses between the West Midlands and London, to help with the disruption caused by our construction work. These are the Community and Environment Fund (CEF) and the Business and Local Economy Fund (BLEF).

The CEF is designed to give communities the opportunity to share in the benefits of HS2. It is an allocated fund that communities are able to apply for, to help to support local projects that aim to improve their local area.

The BLEF is designed to support local economies that may be disrupted by the construction of HS2. BLEF grants are for local business support organisations and local authorities to help maintain business activity in local communities.

For more information about each of these funds, including how to apply, please visit: <https://www.groundwork.org.uk/hs2funds>



Keeping you informed

We are committed to keeping you informed about work on HS2. This includes ensuring you know what to expect and when to expect it, as well as how we can help.

Residents' Charter and Commissioner

The Residents' Charter is our promise to communicate as clearly as we possibly can with people who live along or near the HS2 route.

www.gov.uk/government/publications/hs2-residents-charter

We also have an independent Residents' Commissioner whose job is to make sure we keep to the promises we make in the Charter and to keep it under constant review. Find reports at:

www.gov.uk/government/collections/hs2-ltd-residents-commissioner

You can contact the Commissioner at: residentscommissioner@hs2.org.uk

Construction Commissioner

The Construction Commissioner's role is to mediate and monitor the way in which HS2 Ltd manages and responds to construction complaints. You can contact the Construction Commissioner by emailing: complaints@hs2-cc.org.uk

Property and compensation

You can find out all about HS2 and properties along the line of route by visiting:

www.gov.uk/government/collections/hs2-property

Find out if you're eligible for compensation at:

www.gov.uk/claim-compensation-if-affected-by-hs2

Holding us to account

If you are unhappy for any reason you can make a complaint by contacting our HS2 Helpdesk team. For more details on our complaints process, please visit our website:

www.hs2.org.uk/how-to-complain

Contact Us

Contact our HS2 Helpdesk team all day, every day of the year on:

 Freephone **08081 434 434**

 Minicom **08081 456 472**

 Email **hs2enquiries@hs2.org.uk**

Write to:

FREEPOST

HS2 Community Engagement

Website **www.hs2.org.uk**

To keep up to date with what is happening in your local area, visit:

www.hs2inyourarea.co.uk

Please contact us if you'd like a free copy of this document in large print, Braille, audio or easy read. You can also contact us for help and information in a different language.

HS2 Ltd is committed to protecting personal information. If you wish to know more about how we use your personal information please see our Privacy Notice <https://www.gov.uk/government/publications/high-speed-two-ltd-privacy-notice>

Reference number: HS2-EW-BBV-Ph1-Ar-No-N1-Prog-works-17-29/09/2020

High Speed Two (HS2) Limited, registered in England and Wales.

Registered office: Two Snowhill, Snow Hill Queensway, Birmingham B4 6GA.

Company registration number: 06791686. VAT registration number: 181 4312 30.