



Notice of archaeological trial trench works – Upper Boddington

December 2020 | www.hs2.org.uk

High Speed Two (HS2) is the new high speed railway for Britain. We are continually reviewing the works on our construction sites in line with Government and Public Health England (PHE) advice on dealing with COVID-19. The Government's current strategy makes it clear that construction activity can continue as long as it complies with this guidance.

Please be assured that only sites that can operate within the guidelines are operational. All sites will remain under constant review. We have postponed all face-to-face engagement events and meetings and have put in place a number of channels to communicate with communities, such as letters and phone calls, as well as updates and alerts from each of the local community websites. You can sign up for regular updates in your local area at www.hs2inwarwickshire.co.uk and www.hs2innorthants.co.uk

As part of HS2's continued programme of surveying works in your local area we have already carried out geophysical surveys to identify areas of possible archaeological interest. The next steps of our archaeological investigation work will involve excavating trenches and recording any finds.

When will these works take place?

These works are planned to start 4 January 2021 and will be completed by April 2021.

The site for the archaeology works is located just south of Glyn Davies Wood off Banbury Road. Access to the site will be along Banbury Road opposite the Y junction between Wormleighton and Upper Boddington. Please see the map enclosed for more details.

If you have a question about HS2 or our works, please contact our HS2 Helpdesk team on 08081 434 434 or email hs2enquiries@hs2.org.uk

Duration of works

The works are planned to start 4 January 2021 and continue until April 2021.

Normal working hours:

Monday to Friday 8am – 6pm.

We may also be on site for one hour's quiet start-up and shutdown outside of these times.

What to expect

Some additional traffic on local roads.

Noise from the equipment used for the works.

Site operated with 24hr security and temporary flood lighting.

Site storage and a small compound.

What we will do

Manage any impacts, such as traffic and noise with the aim of reducing them.

Notice of archaeological trial trench works – Upper Boddington

www.hs2.org.uk

Notification



What will we be doing?

The trial trenching will require the excavation of 125 trial trenches and will enable a greater understanding of archaeology in the area. Once the work is completed, the trenches will be backfilled.

The digging and investigations will be done by teams of three workers using a mechanical excavator. There will be a maximum of two teams on site and a small number of supervision staff visiting site to ensure the work is progressing to plan and is being done safely.

During our archaeological investigations we will be planning opportunities for communities to find out about our work through information events, specific talks. Once we have more information they will be publicised through the local HS2 website at: www.hs2inwarwickshire.co.uk and www.hs2innorthants.co.uk

Compound set up

The compound for this work shall be located and accessed off Banbury Lane, please see the map enclosed for further detail. The site compound will contain track matting, lighting, 24hr security, welfare facilities and be contained within temporary fencing.

How may this affect you?

We will be working hard to ensure any impacts on residents are kept to a minimum during these and all our future works. You may notice a little extra traffic on the road immediately around the sites with workers moving to and from the site, and occasional delivery vehicles. There may be some noise from the machinery. All machinery will be restricted to running between the hours of 8am and 6pm Monday to Friday. There may be occasional weekend working subject to local authority consent.

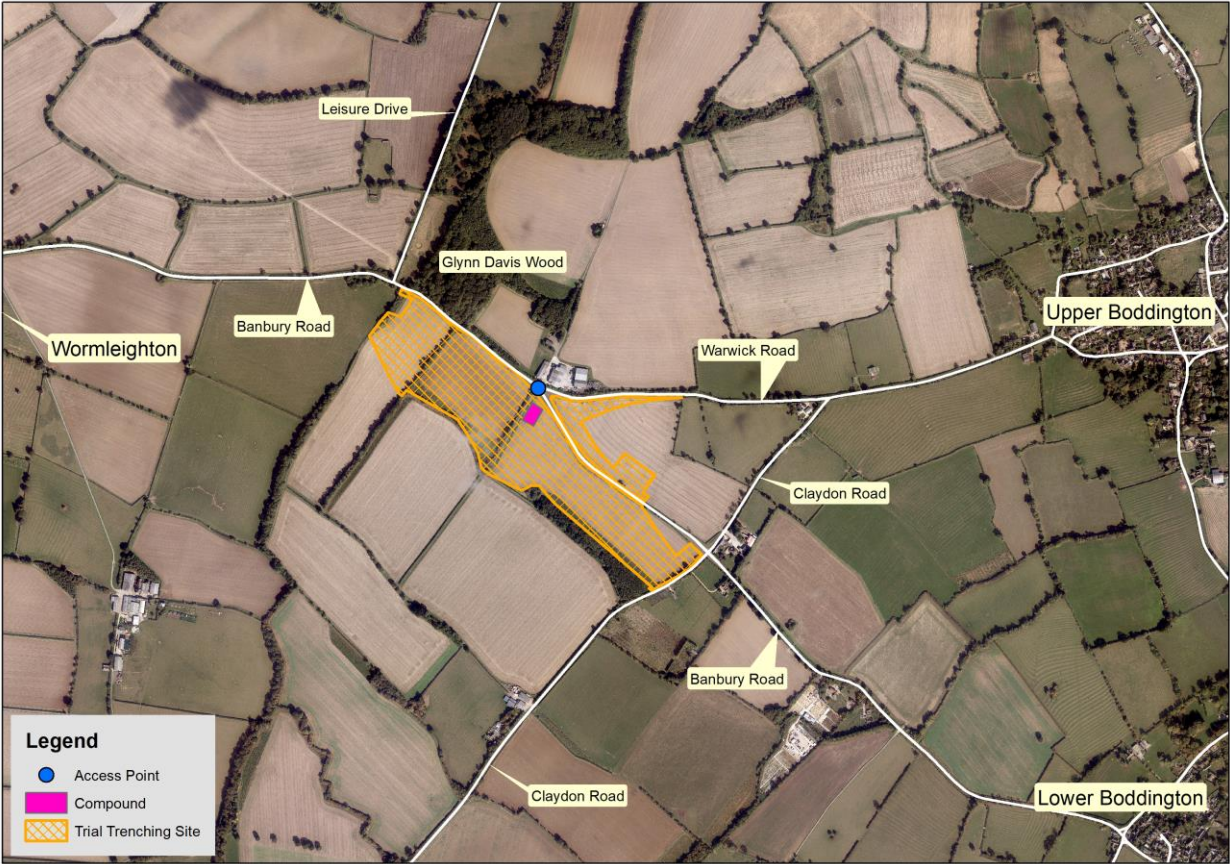
For further updates about these works and HS2 in general, please visit www.hs2inwarwickshire.co.uk and www.hs2innorthants.co.uk where you can sign up to news alerts.

Notice of archaeological trial trench works - Upper Boddington

www.hs2.org.uk

Location of trial trench evaluation works, site access and compound

Notification



Keeping you informed

We are committed to keeping you informed about work on HS2. This includes ensuring you know what to expect and when to expect it, as well as how we can help.

Residents' Charter and Commissioner

The Residents' Charter is our promise to communicate as clearly as we possibly can with people who live along or near the HS2 route. www.gov.uk/government/publications/hs2-residents-charter

We also have an independent Residents' Commissioner whose job is to make sure we keep to the promises we make in the Charter and to keep it under constant review. Find reports at: www.gov.uk/government/collections/hs2-ltd-residents-commissioner

You can contact the Commissioner at: residentscommissioner@hs2.org.uk

Construction Commissioner

The Construction Commissioner's role is to mediate and monitor the way in which HS2 Ltd manages and responds to construction complaints. You can contact the Construction Commissioner by emailing: complaints@hs2-cc.org.uk

Property and compensation

You can find out all about HS2 and properties along the line of route by visiting: www.gov.uk/government/collections/hs2-property
Find out if you're eligible for compensation at: www.gov.uk/claim-compensation-if-affected-by-hs2

Holding us to account

If you are unhappy for any reason you can make a complaint by contacting our HS2 Helpdesk team. For more details on our complaints process, please visit our website: www.hs2.org.uk/how-to-complain

Contact Us

Contact our HS2 Helpdesk team all day, every day of the year on:

 Freephone **08081 434 434**

 Minicom **08081 456 472**

 Email **hs2enquiries@hs2.org.uk**

Write to:

FREEPOST

HS2 Community Engagement

Website **www.hs2.org.uk**

To keep up to date with what is happening in your local area, visit: **www.hs2inyourarea.co.uk**

Please contact us if you'd like a free copy of this document in large print, Braille, audio or easy read. You can also contact us for help and information in a different language.

HS2 Ltd is committed to protecting personal information. If you wish to know more about how we use your personal information please see our Privacy Notice <https://www.gov.uk/government/publications/high-speed-two-ltd-privacy-notice>

Reference number: FUS_AWN_0143 HS2-EWFusion-Ph1-Ar-Ce-C3-Cul-Her-50-01/01/2021

High Speed Two (HS2) Limited, registered in England and Wales.
Registered office: Two Snowhill, Snow Hill Queensway, Birmingham B4 6GA.
Company registration number: 06791686. VAT registration number: 181 4312 30.